

W&O POS Server Setup

V4.0.0

W&O POS Server App setup	2
W&O POS Android App Setup	4
W&O POS Android App Printer Setup	6
How to Purchase and Register W&O POS App.....	6
How to Update W&O POS App	7
How to migrate database from W&O POS standalone version	9
How to Use Android emulator	10
How to Reserve IP Address for Windows PC	11
Problem & Solution.....	14







W&O POS Server App Setup

The instruction includes W&O POS Server App setup and W&O POS tablet/phone App setup. The “wno-pos-server-app-vx.x.x.zip” is the windows server app, and the “WnOPOS_ST_Server_vx.x.x-release.apk” is the android tablet/phone app.

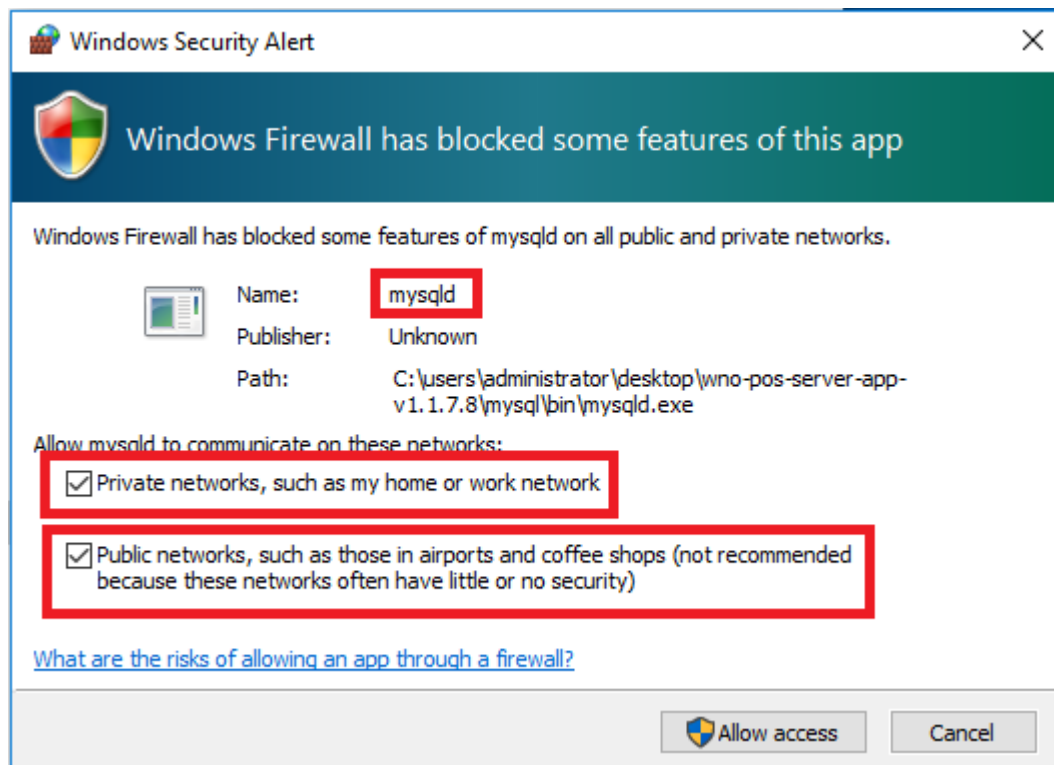
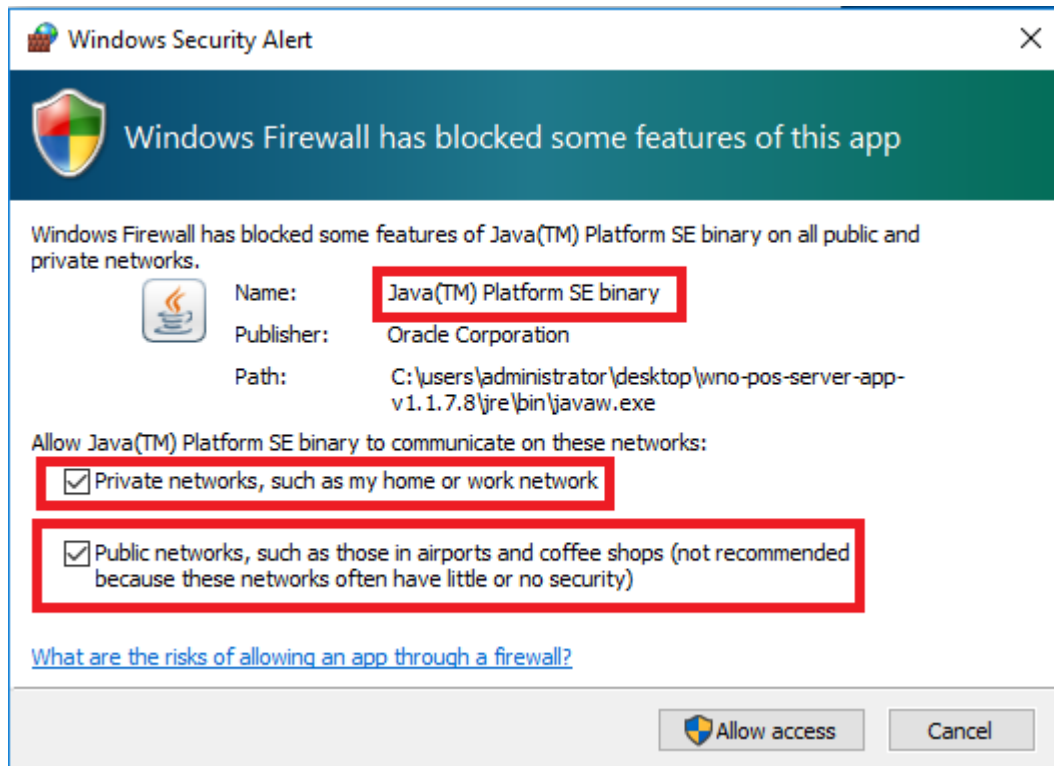
W&O POS Server App setup

The W&O POS Server App is required to install in Windows XP or above.

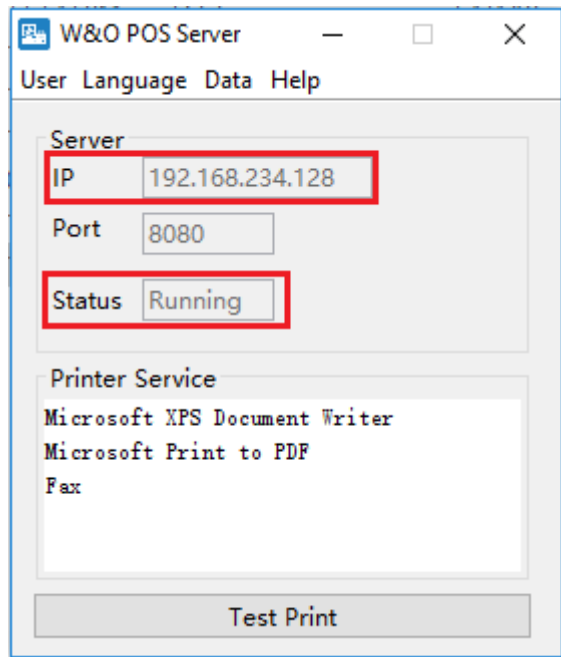
1. After download “wno-pos-server-app-vx.x.x.zip”, unzip to c:/
2. Double click “wno-pos-server-app.exe”

Name	Date modified	Type	Size
 apache-tomcat	30/12/2015 17:33	File folder	
 jre	30/12/2015 17:33	File folder	
 lib	30/12/2015 17:33	File folder	
 mysql	30/12/2015 17:34	File folder	
 WnO_POS_Server_Setup_Guide.pdf	26/11/2015 9:58	Adobe Acrobat D...	181 KB
 wno-pos-server-app.exe	28/12/2015 18:12	Application	106 KB

3. You need to allow Windows Firewall to Java and MySQL. These steps are very important, if you do not see the popup screen, it is better to change app path and restart the app again.



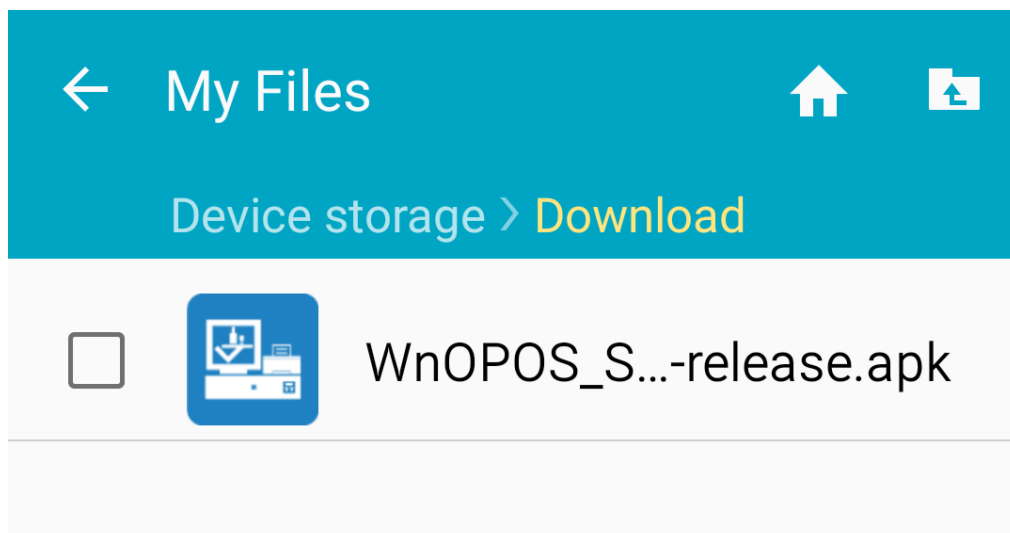
4. In W&O POS Server console, make sure the status is running. The IP will be used at server setting in the W&O POS Tablet App. If the status is not running, restart it again.



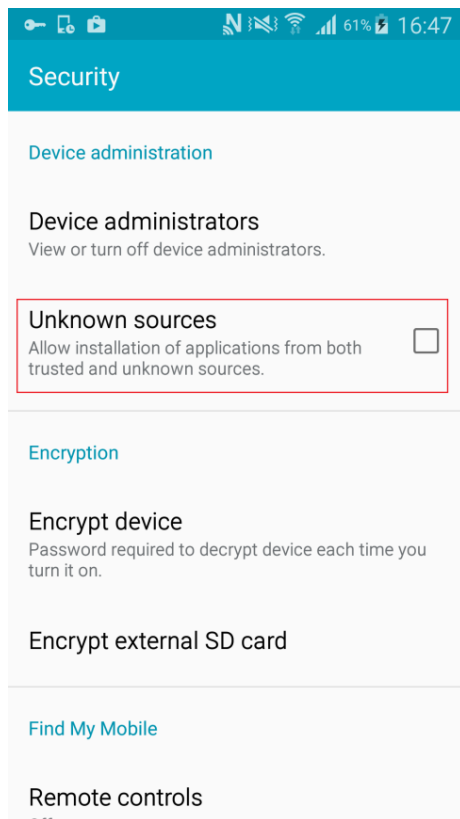
W&O POS Android App Setup

The W&O POS Android App is required to install in tablet or phone with android version 4 or above. If you first time run the app, it requires internet connection for registration.

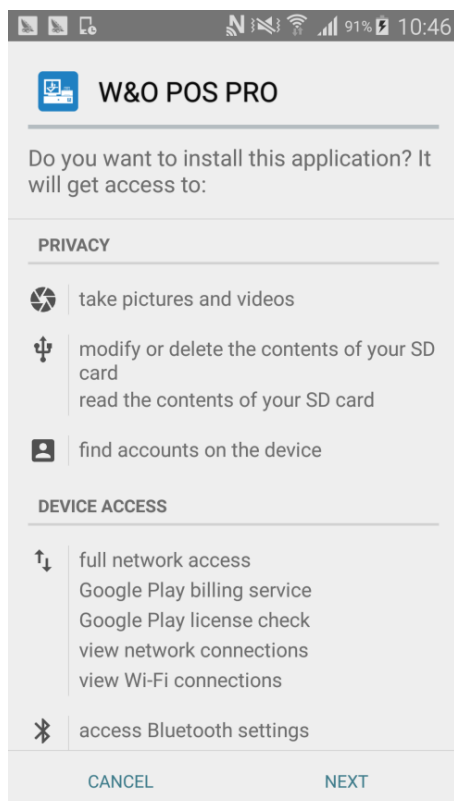
1. Download the W&O POS android apk file
2. After the download, go to SD Card folder and install the apk file.



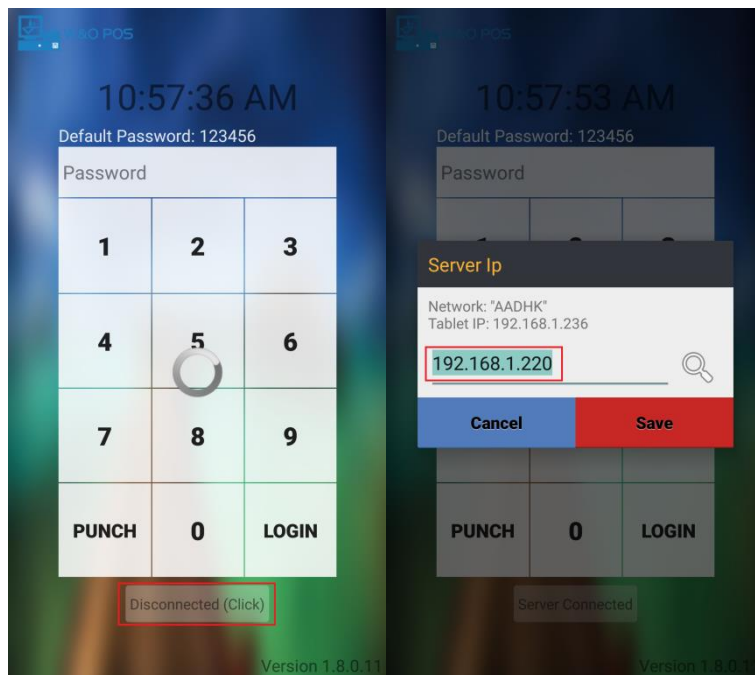
3. If the installation is blocked, you need to set the security to allow install the apk file.



4. Before start installation, it will ask for confirm installation, then just click Next.



- After the installation, click the W&O POS icon to run. The app will ask for the server IP that is from W&O POS Server App. Remember the server app must run first.



- After input correct server IP, you can login with default account “admin” and password “000000”.

W&O POS Android App Printer Setup

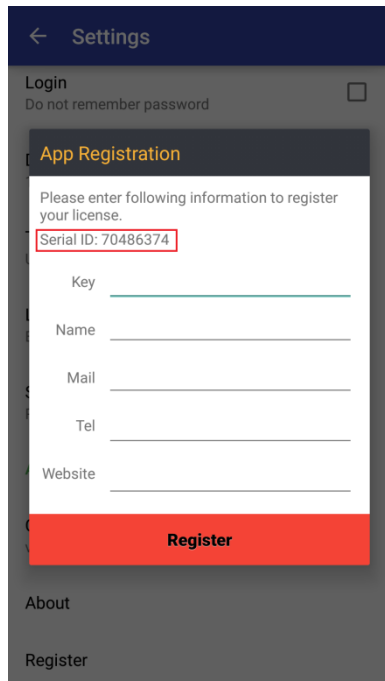
W&O POS App supports different kinds of printer connections. You can choose one of connection, which is most suitable for your need. I will suggest you to use **W&O POS Printer Adapter**, which is the most stable and supports all kind of printers. The server version includes W&O POS printer adapter, you do not need to install again. For more detail, you can download [printer_setup_guide.pdf](http://www.wnopus.com/doc/Printer_Setup_Guide.pdf) (http://www.wnopus.com/doc/Printer_Setup_Guide.pdf).

You are ready to take order and print receipt.

If you follow the above steps still having problem, please email me (support@wnopus.com).

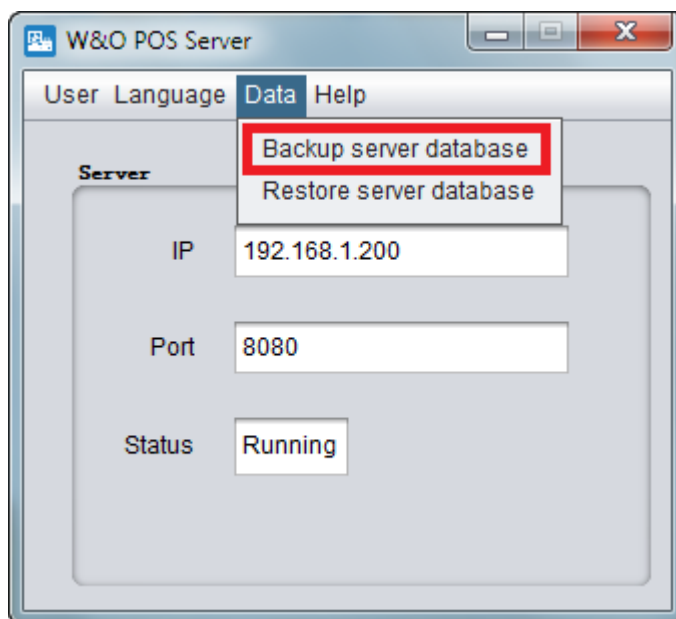
How to Purchase and Register W&O POS App

After the installation and setup, you will have 15 days of trying period. Please purchase the W&O POS app before the expiration. We only accept PayPal payment. After the payment, email us with the serial id in the app on your android devices. We will send you activation codes.

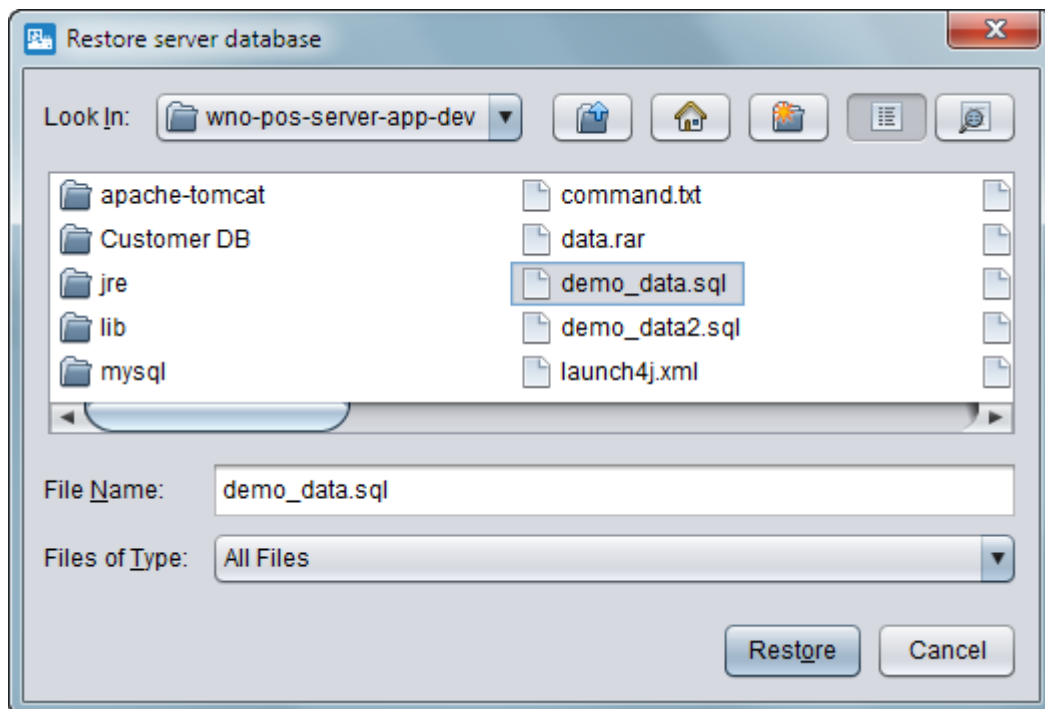
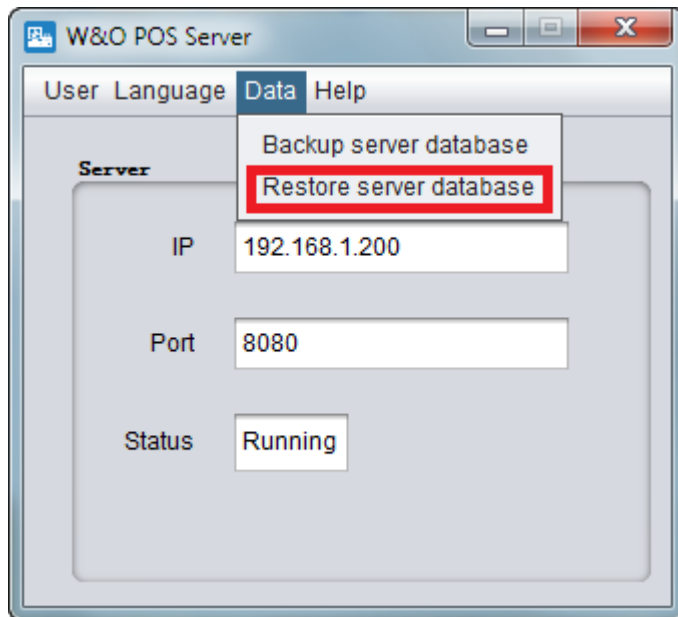


How to Update W&O POS App

1. First, you need to backup database.



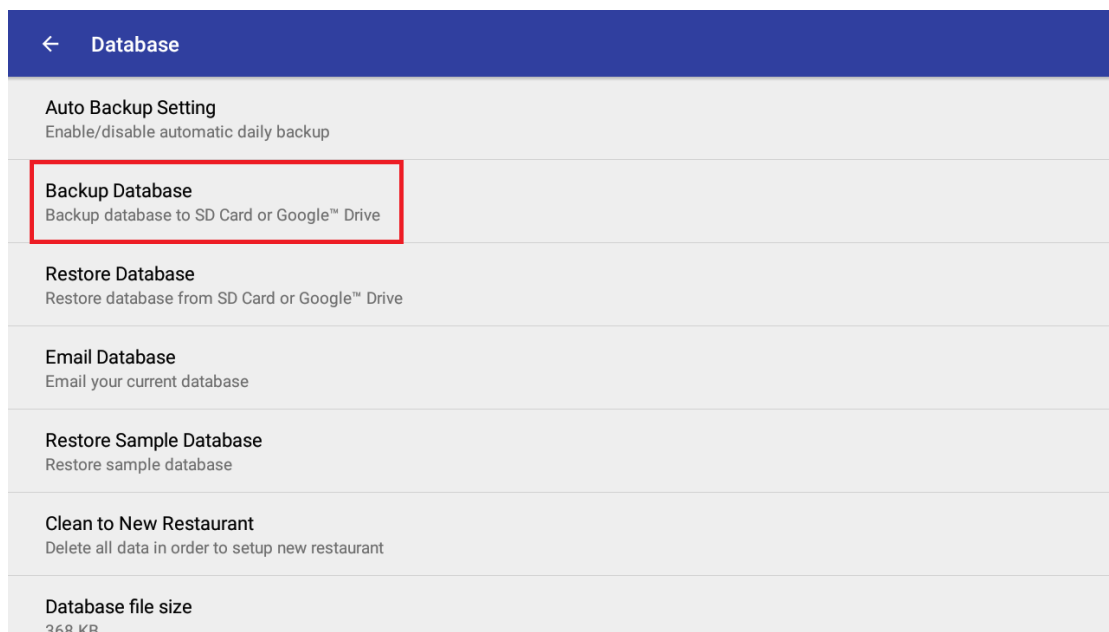
2. Then download new version of wno-pos-server-app. Unzip and run the server program. Restore back the database.



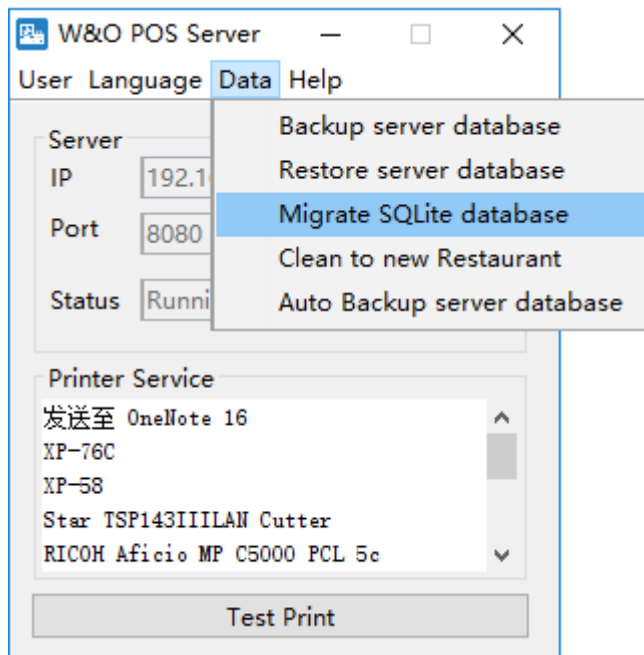
3. You also may also need to update new version of W&O POS Android app. Just uninstall and install W&O POS Android app, and all the data will synchronize in the table/phone from the server.

How to migrate database from W&O POS standalone version

1. Backup database in W&O POS standalone version

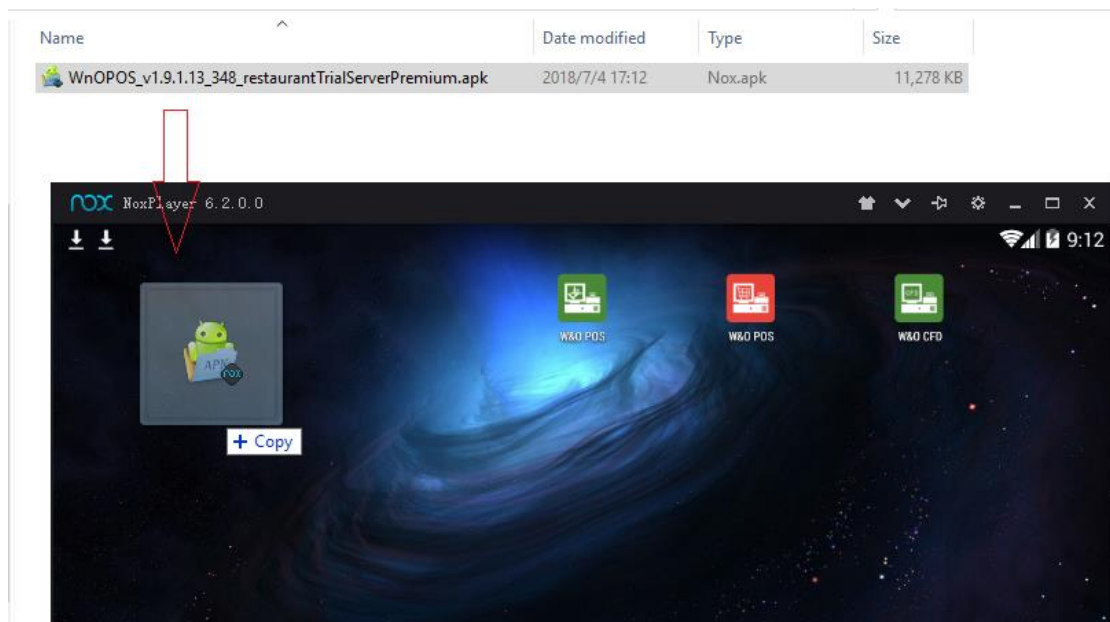


2. Migrate the database in the W&O POS Server app

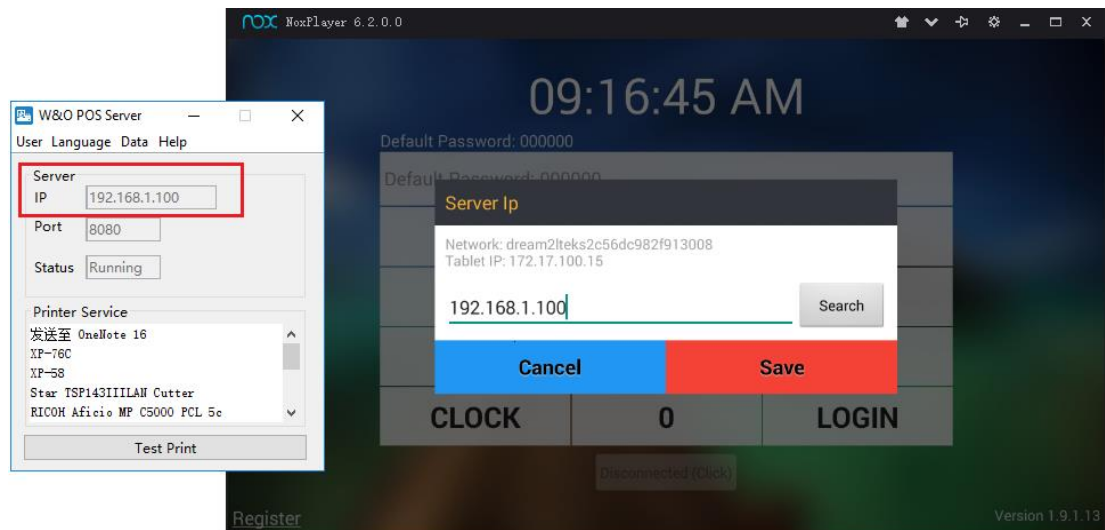


How to Use Android emulator

1. Download Android emulator Nox from <https://www.bignox.com>
2. Install W&O POS app on Nox by dragging W&O POS app on to Emulator



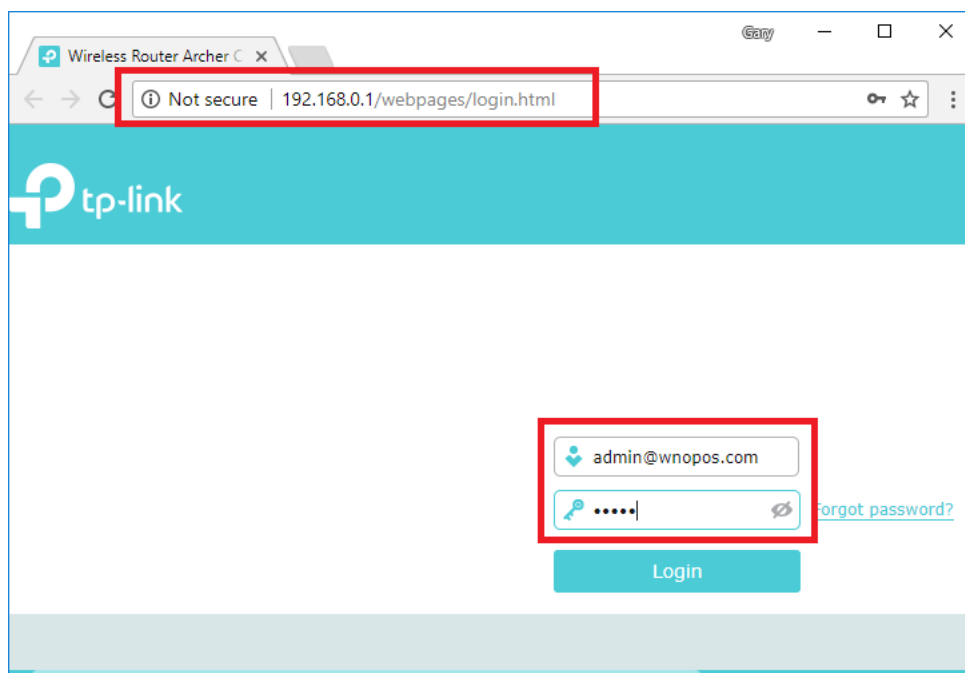
3. Run W&O POS app on Nox. Then manually input server IP in the Server IP Dialog. The auto search of server IP on W&O POS app in Emulator may be different and will cause problem for KDS and CFD.



How to Reserve IP Address for Windows PC

We strongly suggest reserving IP Address for Windows PC, so that IP Address will not change when you restart PC or router. Here is example of reserving IP Address of Windows PC by TP-Link.

1. Open your browser and input your IP Address <http://192.168.0.1> to access Router Admin Portal. Then input user and password to login.



2. Go to Advanced > DHCP Server > Address Reservation, click add

TP-Link Advanced DHCP Server settings page. The 'Advanced' tab is selected. Under 'Address Reservation', the 'Add' button is highlighted. Below it, a table shows one reservation for MAC 30-85-A9-3C-73-5C with IP 192.168.0.100. The 'DHCP Client List' table below shows four clients, including the one with the reserved IP.

ID	Client Name	MAC Address	Assigned IP Address	Lease Time
1	SKY-20160326VXY	30-85-A9-3C-73-5C	192.168.0.100	Permanent
2	android-769262b76dd2429f	40-F3-08-4B-8D-51	192.168.0.173	43:43:25
3	android-8b0e3aff33444e2c	AC-36-13-D6-DA-A9	192.168.0.133	45:9:18
4	android-1613b73047f35b3a	0C-56-5C-21-06-E6	192.168.0.110	44:19:41

3. On the Address Reservation tab, input Mac Address, IP Address and Description for the Windows PC from the DHCP Client List. After input those information, click save.

TP-Link Advanced DHCP Server settings page. The 'Address Reservation' tab is selected. The 'Add' button is highlighted. The form fields are filled with: MAC Address: 30-85-A9-3C-73-5C, IP Address: 192.168.0.100, and Description: WnO POS Server. The 'Save' button is highlighted. Below the form, the 'DHCP Client List' table shows the client with the reserved IP.

ID	Client Name	MAC Address	Assigned IP Address	Lease Time
1	SKY-20160326VXY	30-85-A9-3C-73-5C	192.168.0.100	Permanent
2	android-769262b76dd2429f	40-F3-08-4B-8D-51	192.168.0.173	43:43:25
3	android-8b0e3aff33444e2c	AC-36-13-D6-DA-A9	192.168.0.133	45:9:18
4	android-1613b73047f35b3a	0C-56-5C-21-06-E6	192.168.0.110	44:19:41

4. You will see the IP Address of Windows PC is reserved on the list.

The screenshot shows the TP-Link Advanced Network settings page. The 'Advanced' tab is selected. Under the 'DHCP Server' section, the 'Address Reservation' table is visible. The table has columns: ID, MAC Address, Reserved IP Address, Description, Status, and Modify. A single entry is listed with ID 1, MAC Address 30-85-A9-3C-73-5C, Reserved IP Address 192.168.0.100, and Description WnO POS. The 'Save' button is also visible.

ID	MAC Address	Reserved IP Address	Description	Status	Modify
1	30-85-A9-3C-73-5C	192.168.0.100	WnO POS	Lightbulb icon	Edit/Delete icons

5. You can reboot the router to activate the setting immediately.

The screenshot shows the same TP-Link Advanced Network settings page, but with a 'Reboot' button highlighted in the top right corner. A confirmation dialog box is displayed in the center, asking 'Are you sure you want to reboot the router?'. The 'Yes' button is highlighted with a red box.

Problem & Solution

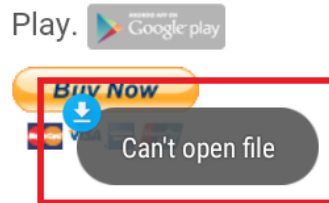
1. After downloaded the apk file from website, if you click on the notification to open the apk file, it will show "Can't open file".



The stand-alone version is without server, all data are saved in local device without Internet connection. It is suitable for small restaurant without complex setting. You can download/install the 15 days trial full version.

[Download Tablet Apk](#)

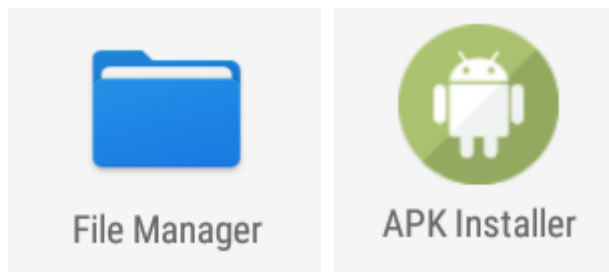
Or you can directly download and purchase in Google Play.



The local server version supports multiple tablets taking orders at same time, all data are saved in



You should use any File Manager or Apk Installer to install apk file.



End